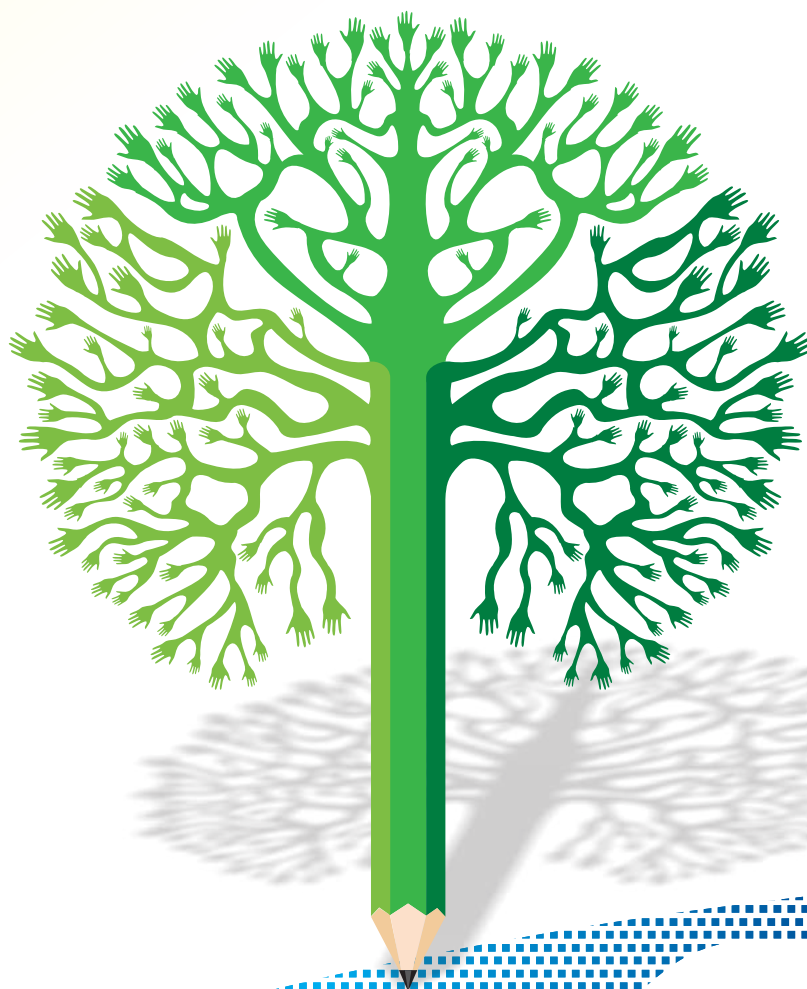
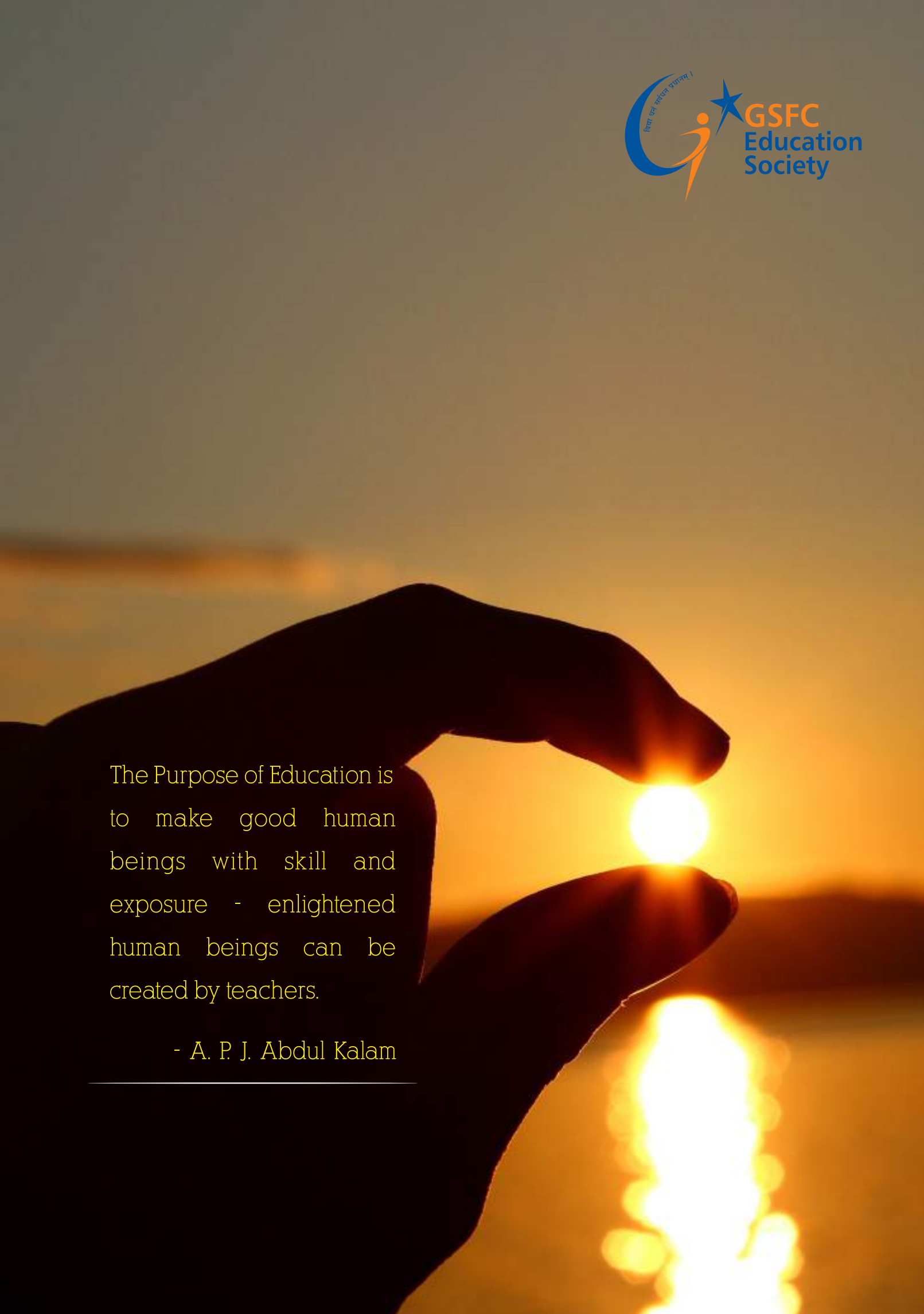


# ILLUMINATING the Future of our Scions



**GSFC**  
**UNIVERSITY**  
EDUCATION RE-ENVISIONED

The background of the entire page is a photograph of a sunset or sunrise over water. A dark silhouette of a hand is shown in the lower half, with the thumb and index finger holding a small, bright, glowing orb. The sun is visible in the background, creating a strong orange and yellow glow that reflects on the water's surface.

The Purpose of Education is  
to make good human  
beings with skill and  
exposure - enlightened  
human beings can be  
created by teachers.

- A. P. J. Abdul Kalam

---



Transforming our  
students to  
employable  
professionals

## ABOUT GSFC UNIVERSITY

GSFC University is incorporated under the Gujarat Private Universities Act 2009 as amended by Second Amendment of 2014 and is established by Gujarat state Fertilisers and Chemicals Ltd. (GSFC) through GSFC Education Society. GSFC has established GSFC University as its Corporate Social Responsibility (CSR) initiative to continue the tradition of serving the community in multiple ways.

## VISION

GSFCU strives to be the best compact boutique institution with a futuristic approach, encouraging student centric culture and sharpened focus on developing industry ready & employable students with all-round development.

## MISSION

- Establish an institution, which promotes creativity and innovation.
- Develop unique quality standards for academic excellence and pedagogical innovations.
- Remain agile through learning ecosystem with flexible processes & systems.
- Holistic growth for industry readiness.



Our educational abode dwells on the philosophy of "Buddhi Gyanen Shudhayanti". It means purification of mind and intellect through knowledge, which is vital to human life. It strengthens the path of success towards perfection. All the while being compassionate towards mankind and society at large. A huge banyan tree is a part of our logo. It symbolizes multiple roots of innovation that sprout towards sustainable growth. The rising Sun in the background of banyan tree in the logo, symbolizes plethora of opportunities for accomplishment in life.



# WHY GSFC UNIVERSITY?

GSFC University seeks to enhance the academic, personal and professional development of its students to meet today's dynamic needs of employers, the economy and society.



## Objectives & Differentiators

- Industry and business ready manpower with targeted employability of 80% students graduating from the university.
- Regular monitoring and evaluation of performance of students and faculty.
- Mandatory Industry exposure of 80 hours for faculty through faculty internship.

GSFC University is a student-centric "teaching only" University designed to produce industry-ready manpower in various disciplines. The University also aims to provide through its Management Development Centre (MDC) useful in-service programmes to employed professionals which can be converted into Certificates, Diplomas, Degrees or Fellowships.

# Practical & Collaborative Learning

GSFC University offers an innovative and hands-on learning environment in modern, top-class facilities. Students build their knowledge and skills in a real-world context through classroom sessions, innovative field projects, group work, interactions with experts from industry, and internships with industry.

The GSFC University campus and buildings supports student-faculty interaction and inquiry by providing flexible indoor and outdoor spaces for team work, projects and reflection.

The faculty works closely with the industry and courses are developed in consultation with senior professionals to ensure students learn contemporary techniques and best practices. All courses include the internship programmes, providing students the skill sets to operate in a professional environment and develop an appreciation of the ground realities.

Education journey start with a well designed foundation course in the first year aimed at holistic development and inculcating various soft skills.



## Innovative Practices

- Extensive industrial internship.
- Industry-sponsored R&D projects.
- Regular visits to industrial plants.
- Emphasis on personality development through student managed clubs and well designed foundation courses in the first year.
- 50% industry representatives in Board of Studies.
- 30% Teaching lessons to be delivered by Faculties from industry.





## Choice Based Credit System (CBCS)

In a bid to offer student wider choices and have them better prepared for the industry, the university has introduced CBCS system. Accordingly, the courses will consist of Core subjects and Elective subjects. Students can choose from a range of electives and study courses of their preference.

## Campus

The university campus, within the sprawling and lush green GSFC grounds, houses the School of Technology (SoT), the School of Science (SoS) and the School of Management (SoM). The University has already put in place, five year Institutional Development Plan (IDP) in line with its vision which includes Master plan covering infrastructure requirements. Improvements and upgrades to existing facilities is an ongoing feature with new educational and recreational spaces being added, and the GSFC University campus gets reinvented.

## Academic Resources

The University helps students reach their academic excellence by offering best resources and facilities to support their learning.

- Fully Functional Laboratories for all the Courses
- Library with digital and printed resources, journals, research articles, books and encyclopedias
- IT and computer centre fitted with work stations for extended computing and IT-related academic work
- Air-conditioned auditorium for cultural programmes and conferences
- Smart Class Rooms





## Courses @ GSFC University

### School of Technology

#### B.Tech

- Chemical Engineering
- Mechanical Engineering (specialization in Smart Manufacturing / Robotics & Automation)
- Computer Science Engineering
  - Data science, Artificial Intelligence (AI) & Machine Learning (ML)
  - Internet of Things & Automation
  - Cyber Security
- Fire & Environment, Health, Safety Engineering

### School of Management

#### B.B.A

- General (specialization in HR | Marketing | Accounting & Finance | IT Management)
- Business Analytics New

### School of Science

#### B.Sc (Hons.)

- Chemistry
- Biotechnology
- Industrial Chemistry New
- Microbiology New

#### M.Sc

- Chemistry - Specialization in
  - Organic Chemistry
  - Analytical Chemistry
- Biotechnology
- Industrial Microbiology New

#### Ph.D (Part Time)

- Chemistry
- Biotechnology





# Vibrant Campus

The GSFC University offers a range of services and facilities to help students settle in throughout their time with the University.

- Wifi-enabled campus/Digital campus
- End-to-End (E2E) solution is being developed as a part of digital campus in line with digital india campaign aimed at achieving ease of operations leading to efficiency in all activities.
- Indoor and outdoor sports facilities including golf course, swimming pool, badminton courts, cricket grounds and yoga and meditation workshops
- Medical facilities with a hospital and ambulance permanently on GSFC grounds
- Bank and ATM on campus
- Cafeteria

(some of these services are offered at nominal charge)



## Elite Membership & GSFC Facilities

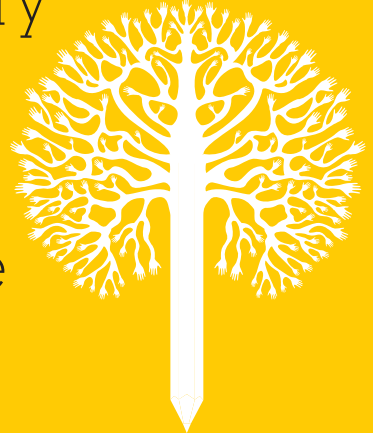
The University is located within the GSFC Complex at Fertilizernagar. Memberships and access to elite facilities available to GSFC officers is also available to students:

- GSFC's Officers Club
- GSFC library with its large collection of technical literature
- Golf course
- R&D and Quality Control Labs
- Tissue Culture Laboratory & Nursery
- Industrial plants of GSFC





## The Industry Connect & Internship Programme



The University offers students a platform to develop skills needed for their professional success. Courses are anchored around hands-on, practice-based approach. They aim to equip students with practical experiences and knowledge, preparing them to meaningfully engage with their future employers.

The Governing Body of GSFC University comprises industrialists; educationists; management, finance and legal experts; and representatives from the social sector. Further, GSFC being one of the star joint sector company promoted by Govt. of Gujarat with more than 60 years of existence with rich legacy, means that it is in tune with the latest trends and opportunities across various disciplines.

GSFC's own plants, subsidiaries and associates expose students to a professional and real-life work space. The company offers its facilities as a learning ground where students engage in projects, challenging case studies and group work.

The mandatory and intensive internship programme gives students a great opportunity to acquire practical knowledge and learn how to work within a corporate environment.

In addition to GSFC, an association has been developed with more than 100 industries for imparting internship on a "Medical College" model.

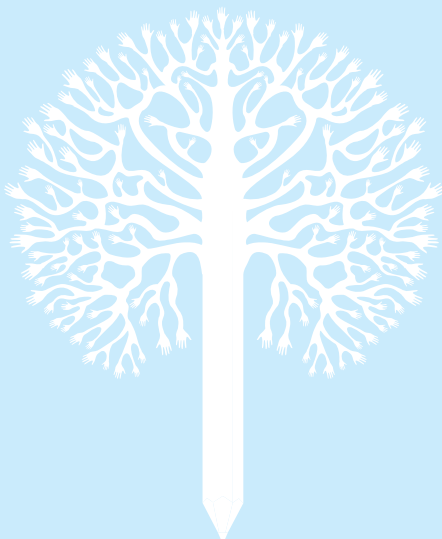


## Learning and Development

The GSFC University seeks to provide unparalleled learning opportunities to its students. The students are taught by academicians who are not only experts in their domains, but are also keenly tuned into the industry. Just as students are encouraged to develop enquiring minds and carry out their own research projects, the faculty too is required to take up applied research-oriented projects and activities for industries.

## Management Development Centre (MDC)

The MDC is separate vertical of the University. Its mandate is to provide technical training-related support to the industry. It offers specialized training programmes for executives, management and graduate engineer trainees; officers and non-management personnel of industries; large-scale employers; and potential entrepreneurs and self-employed professionals.



## Quality Control Cell (QCC)

The Quality Control Cell (QCC) pioneers modern industry quality practices in academics and its training programs. It concurrently evaluate the quality of students, faculty and assets of university. It will also assess the quality of sponsored R&D activities by faculty.



# QCC: Assessment Matrix

## Students will be assessed on:

- Expected versus actual learning
- Sample analysis of answer sheets
- Presentation of internship reports
- Project work & assignments
- Entrepreneurial and leadership roles
- Participation in R&D work
- Performance in paid work assigned to students

## Faculty to be assessed on:

- Assessment by students
- Quality of uploaded videographed lectures
- Quality of case studies
- Presentation on industry attachment



GSFCU Incubation  
Innovation Technology  
Applied Research  
Centre (GUIITAR)

GUIITAR is a cross disciplinary applied research centre which provides opportunities for applied research for faculties and students. It brings together the researchers from engineering, science & management background to work towards sustainable innovation and solving problems of industries and businesses.

GUIITAR also harbors the innovation & incubation centre for new ideas in technologies & other areas of business having potential for exponential growth.

Research & Exploration is considered as the best way of learning and gaining knowledge.

## Beyond Degrees

Holding a degree is rarely enough to get students through the job interview. They need to develop leadership skills, network with professionals and acquire soft skills to kick-start their dream career.



Workshops, seminars, guest lectures and other interactive events are in-built into structured academic life. Through these for a, students get a chance to meet the change makers and develop a genuine interest in learning and personal development.

Students also get opportunities to mingle with professionals on the GSFC company premises through recreational and professional avenues such as golf, the company library and other informal interactions. Such opportunities are learning grounds for etiquette and personality development for the corporate world.

The University encourages students to actively participate in various intramural and extramural activities throughout their academic journey at the university. The participation by the students earns credits through approved activity credit bank mechanism, leading to offer certification or diploma or advanced diploma in addition to their academic degree.

## Clubs

Civil Modelling Club

Cultural Club

Environmental Club

Event Management Club

Arogyam Club

Heritage Club

Debate and Elocution Club

Code Club

AICHE GSFC University  
Student Chapter

Photography Club

Sports Club

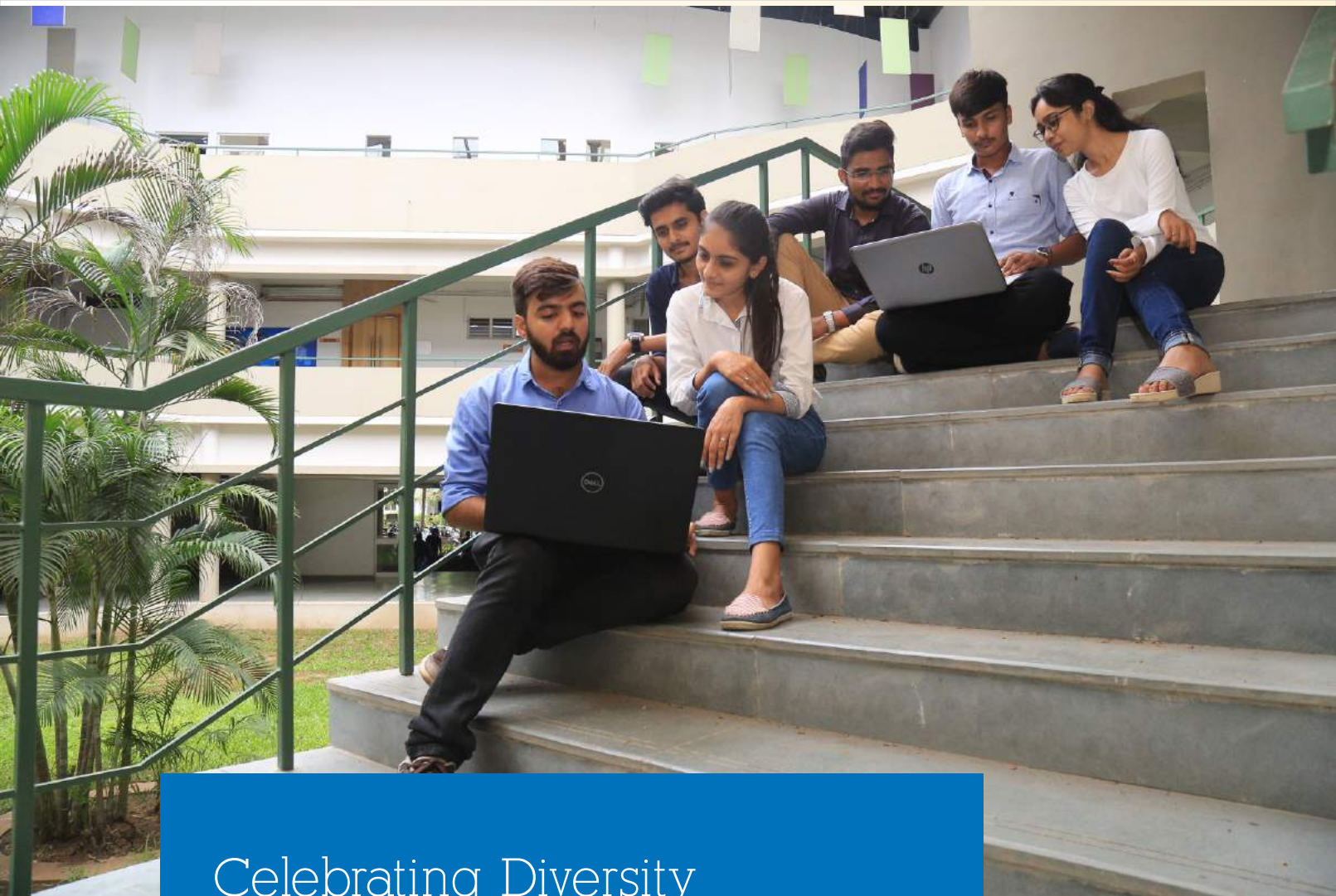
Robotics - 3D Printer - Drone  
Development Club

## Not Just Classroom Academics

Life at campus is not just about classrooms and academics. Students can network and pursue a range of interests covering sports, cultural, technical, literary or just about any area of their choice through clubs that they are free to form. Campus life is routinely animated with festivals, competitions and club activities round the year.





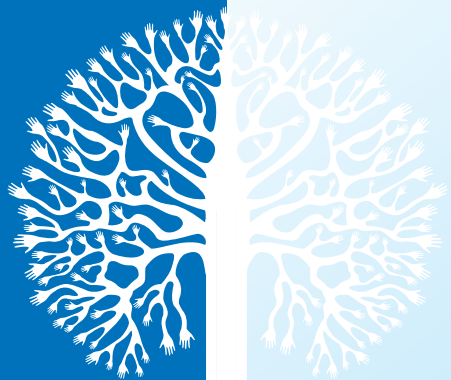


## Celebrating Diversity

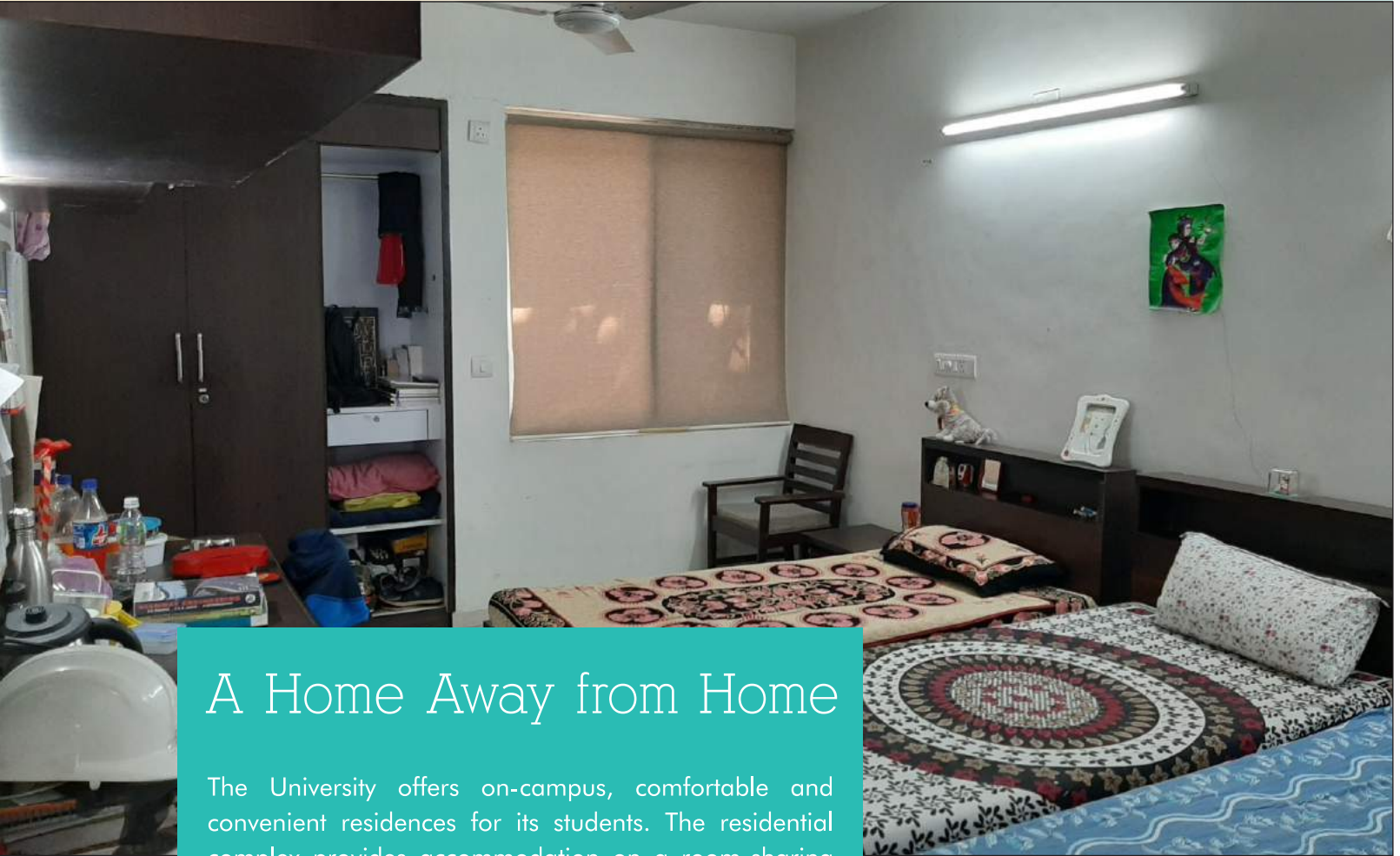
The GSFC University is located on the outskirts of Vadodara, a multicultural city. Vadodara is unique, in that it is cosmopolitan, making it easy for students across the country to fit in, but also small enough so that one does not feel like a stranger. There are plenty of choices near the campus for students to eat, shop for supplies or pursue leisure. Theatres, markets and venues for cultural events are all within easy reach.

## The student selection process aims at:

- Giving admissions through merit-based competitive selection process
- Gender equality with 50% women students







## A Home Away from Home

The University offers on-campus, comfortable and convenient residences for its students. The residential complex provides accommodation on a room-sharing basis, and ensures safety and well-being for all the students staying there. All rooms have attached bathroom. The complex is designed to give the residents a sense of home and living in a big family. There are simple common spaces in the complex for students to relax, interact and study.



## Equity Initiatives

The University has approved a Gender Framework to create a gender-friendly campus that helps girls realize their academic and personal potential.











**GSFC**  
**UNIVERSITY**  
EDUCATION RE-ENVISIONED

Vigyan Bhavan, Fertilizernagar, Vadodara

For more information,  
Call us at 0265-3093740/ +91 75730 02444 or  
log on to [www.gsfcuni.edu.in](http://www.gsfcuni.edu.in)



GSFC\_University



gsfcuniversity



gsfcuniversity

